

theMura S180 KNX UP WH

Item no.: 2069650

KNX

Präsenz-/Bewegungsmelder

Description

- Passive infrared motion detector for wall mounting flush-mounted
- Rectangular detection area 170°, 14 x 17 m (238 m²) at 1.2 m mounting height
- For KNX bus system
- 1 channel light and 1 channel presence for HVAC control
- 3 logic channels (AND, OR, XOR)
- KNX Data-Secure
- Operation as fully or semi-automatic possible
- Integrated, freely parameterisable push-button (can be deactivated)
- Manual override via external KNX push-button possible
- One directional brightness measurement (mixed light measurement)
- Teach-in function
- Locking functions
- HVAC channel without brightness influence
- Switch-on delay and follow-up time of HVAC channel adjustable
- Extension of the detection range by master/slave or master/master switching
- Detection sensitivity adjustable
- Test mode for checking function and detection range
- Settings via ETS software (full range of functions)
- With Theben cover frame



Technical data

theMura S180 KNX UP WH	
Measuring range brightness	5 – 3000 lx
Installation type	Wall installation
Light switch-off delay	30 s - 60 min
Light measurement	Mixed light measurement

theMura S180 KNX UP WH	
Ambient temperature	-15°C ... 45°C
Colour	White
Type of protection	IP 20

Subject to technical changes and misprints

additional information at: www.theben.de/product/2069650

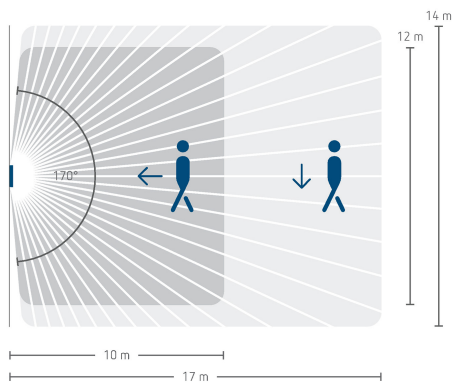
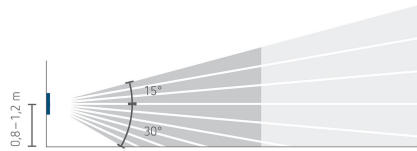
The load data are determined with exemplary selected illuminants and are therefore typical data due to the large number of available products.

theMura S180 KNX UP WH

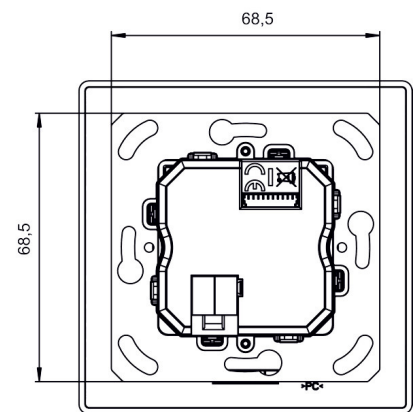
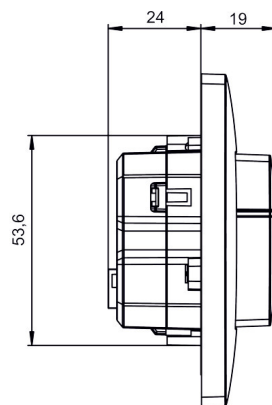
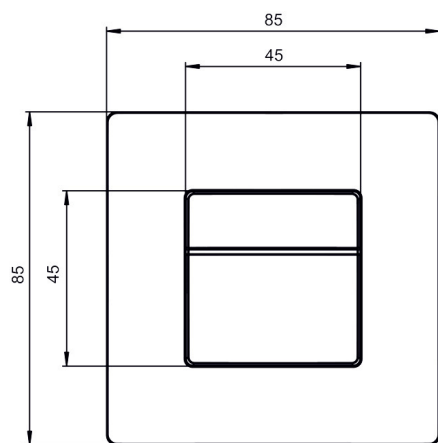
Item no.: 2069650



Detection range for planning applications at a temperature of 21 °C



Scale drawings



Subject to technical changes and misprints

additional information at: www.theben.de/product/2069650

The load data are determined with exemplary selected illuminants and are therefore typical data due to the large number of available products.

19/01/2023

Page 2 of 3

theMura S180 KNX UP WH

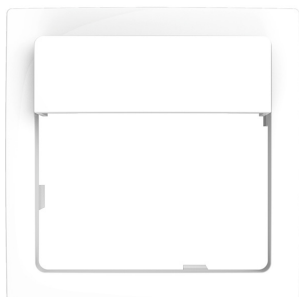
Item no.: 2069650



Accessories

Adapter frame 45A BJBSI WH

Item no.: 9070788



Adapter frame 45A MMP WH

Item no.: 9070790



Adapter frame 45A GS WH

Item no.: 9070791



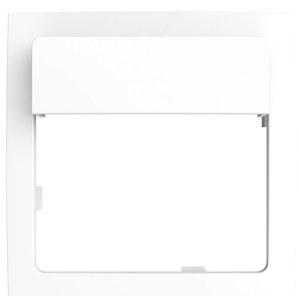
Adapter frame 45A JAS WH

Item no.: 9070789



Adapter frame 45A BS WH

Item no.: 9070792



Adapter frame 45A BJRE WH

Item no.: 9070754



Subject to technical changes and misprints

additional information at: www.theben.de/product/2069650

The load data are determined with exemplary selected illuminants and are therefore typical data due to the large number of available products.

19/01/2023

Page 3 of 3